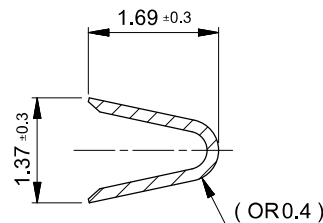
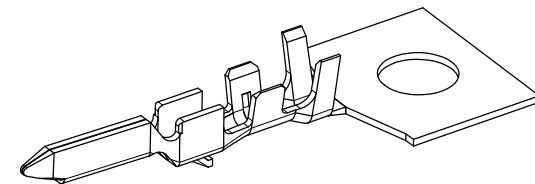


SECTION Z-Z

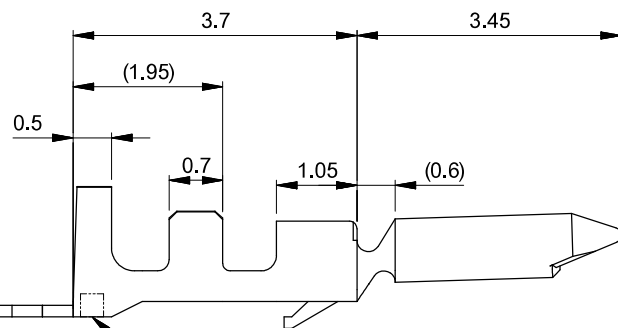


SECTION Y-Y

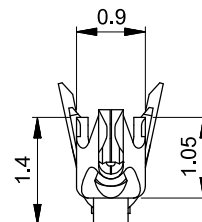


**NOTE**

- ① 材料及び仕上げ(めっき仕様) : TABLE 1 参照  
MATERIAL AND FINISHES : SEE TABLE 1
- ② 適合製品および各種仕様書についてはSHEET 2 を参照。  
PLEASE REFER TO SHEET 2 FOR APPLICABLE PRODUCTS AND SPECIFICATIONS.



トレードマーク  
TRADE MARK



① **TABLE 1**

部品 PART	材質 MATERIAL
ターミナル TERMINAL	りん青銅 PHOSPHOR BRONZE 錫めっき 0.9 MICROMETER MINIMUM (リフロー処理、前めっき) TIN PLATING 0.9 MICROMETER MINIMUM (REFLOW TREATMENT, PRE-PLATED)

DOCUMENT STATUS | P1 | RELEASE DATE | 2022/04/19 08:41:14

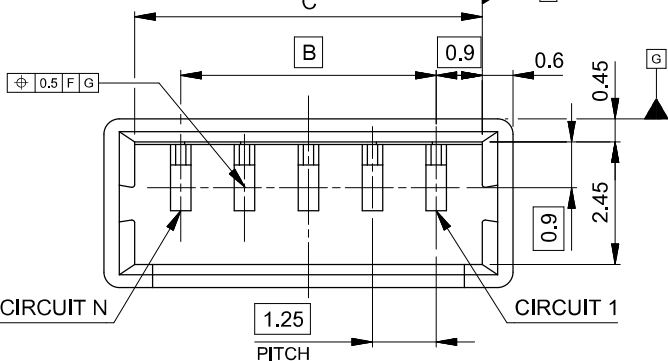
Φ0.5-Φ1.0	AWG#26-28	ポリ袋 POLYBAG	バラ状 LOOSE	501258100
		リール REEL	連鎖状 CHAIN	501258000
被覆外径 INSULATION RANGE	適用電線範囲 WIRE RANGE	梱包形態 PACKING	端子形状 FORM	オーダー番号 ORDER NO
THIS DRAWING CONTAINS INFORMATION THAT IS PROPRIETARY TO MOLEX ELECTRONIC TECHNOLOGIES, LLC AND SHOULD NOT BE USED WITHOUT WRITTEN PERMISSION.				
DIMENSION UNITS: mm SCALE: NTS		CURRENT REV DESC: REVISED		
GENERAL TOLERANCES (UNLESS SPECIFIED)				
ANGULAR TOL ± 3.0°				
4 PLACES ± 0.2	EC NO: 698818	PICOBLADE 1.25 PLUG CRIMP TERMINAL TIN PLATING AWG26-28		
3 PLACES ± 0.2	DRWN: HHLUSSIN 2022/02/16	PRODUCT CUSTOMER DRAWING		
2 PLACES ± 0.2	CHKD: SAKIYAMA 2022/04/19	DOCUMENT NUMBER		
1 PLACE ± 0.2	APPR: AIDA 2022/04/19	501250000-SD		
0 PLACES ± 0.2	INITIAL REVISION:	DOC TYPE: PSD		
	DRWN: QHE31 2021/12/19	DOC PART: 000		
	APPR: KOMURAKAMI 2021/12/24	REVISION: B		
DRAFT WHERE APPLICABLE MUST REMAIN WITHIN DIMENSIONS	THIRD ANGLE PROJECTION	DRAWING	SERIES	MATERIAL NUMBER
		A3-SIZE	50125	CUSTOMER
				SEE CHART
				SHEET NUMBER
				1 OF 2

△<sub>2</sub> 適合製品および各種仕様書  
 APPLICABLE PRODUCTS AND SPECIFICATIONS

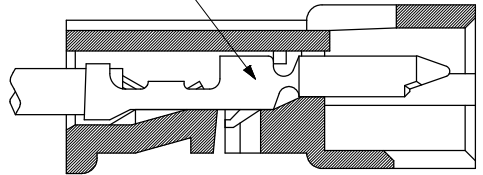
梱包仕様書 PACKING SPECIFICATION		PART NUMBER 501258*00		SPECIFICATION NUMBER 501259200-SPK 200	
適合ハウジング APPLICABLE HOUSING		PART NUMBER 51047**00			
適合嵌合相手 MATE WITH		PART NUMBER 51021**00			
適合圧着端子 APPLICABLE TERMINAL	PLATING TYPE	TIN			
	PART NUMBER	500798*00	500588*00	500798001	500588001
	WIRE SIZE (AWG)	#26-28	#28-32	#26-28	#28-32
製品仕様書 PRODUCT SPECIFICATION		PS-51021-009 PS 001		510211109-PS PS 000	
アプリケーション仕様書 (取扱説明書) APPLICATION SPECIFICATION		510210001-AS PS 000			

製品嵌合図は各"適合嵌合相手"図面参照のこと  
 MATING VIEW: REFER TO EACH "MATE WITH" PART DRAWING.

THIS DRAWING CONTAINS INFORMATION THAT IS PROPRIETARY TO MOLEX ELECTRONIC TECHNOLOGIES, LLC AND SHOULD NOT BE USED WITHOUT WRITTEN PERMISSION.											
DIMENSION UNITS	SCALE	CURRENT REV DESC: REVISED						molex			
mm	NTS							PICOBLADE 1.25 PLUG CRIMP TERMINAL TIN PLATING AWG26-28			
GENERAL TOLERANCES (UNLESS SPECIFIED)								PRODUCT CUSTOMER DRAWING			
ANGULAR TOL ± 3.0°								DOCUMENT NUMBER    DOC TYPE    DOC PART    REVISION			
4 PLACES ± 0.2		EC NO: 698818		2022/02/16		2022/04/19		2022/04/19		2022/04/19	
3 PLACES ± 0.2		DRWN: HHLUSSIN		2022/04/19		2022/04/19		2022/04/19		2022/04/19	
2 PLACES ± 0.2		CHKD: SAKIYAMA		2022/04/19		2022/04/19		2022/04/19		2022/04/19	
1 PLACE ± 0.2		APPR: AIDA		2022/04/19		2022/04/19		2022/04/19		2022/04/19	
0 PLACES ± 0.2		INITIAL REVISION:		2021/12/19		2021/12/24		2021/12/24		2021/12/24	
DRAFT WHERE APPLICABLE MUST REMAIN WITHIN DIMENSIONS		DRWN: QHE31		2021/12/19		2021/12/24		2021/12/24		2021/12/24	
THIRD ANGLE PROJECTION		APPR: KOMURAKAMI		2021/12/19		2021/12/24		2021/12/24		2021/12/24	
DRAFT WHERE APPLICABLE MUST REMAIN WITHIN DIMENSIONS		DRAWING		SERIES		MATERIAL NUMBER		CUSTOMER		SHEET NUMBER	
DRAFT WHERE APPLICABLE MUST REMAIN WITHIN DIMENSIONS		A3-SIZE		50125		SEE CHART		CUSTOMER		2 OF 2	



適合ターミナル: 50125, 50133 シリーズ  
 APPLICABLE TERMINAL: 50125, 50133 SERIES



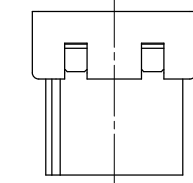
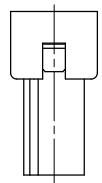
ターミナル装着状態図  
 TERMINAL ASSEMBLY DRAWING

NOTES

- 1 適合製品及び各種仕様書は SHEET 2を参照のこと。  
 REFER TO SHEET 2 ABOUT APPLICABLE PRODUCTS AND VARIOUS SPECIFICATIONS.
- 2 材質: TABLE 1 参照  
 MATERIAL: SEE TABLE 1
- 3 発注番号  
 ORDER NO  
**51047 \*\* 00**

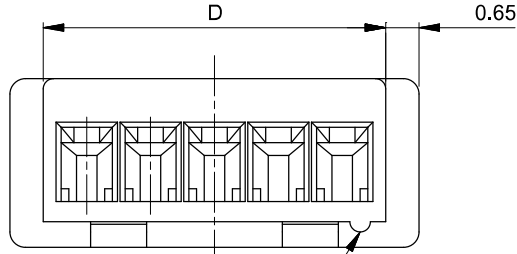
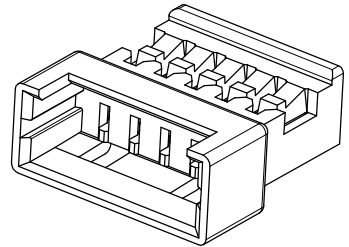
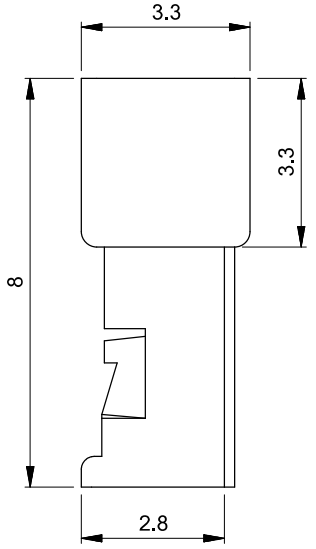
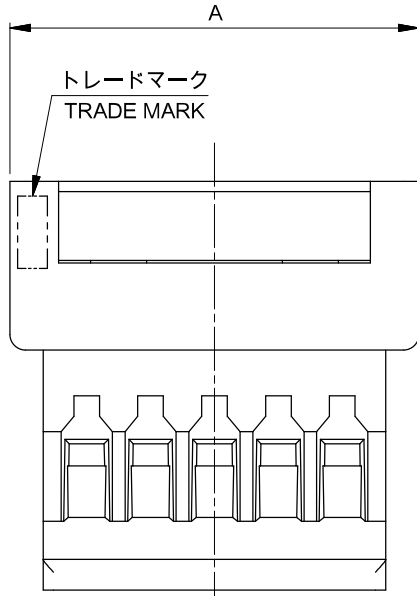
極数  
 CIRCUIT SIZE

- 4 ロック窓は、2,3極は1ヶ、4極以上は2ヶとする。  
 LOCKING WINDOW: ONE PLACE FOR 2 AND 3 CIRCUIT, AND TWO PLACES FOR MORE THAN 4 CIRCUIT.



2, 3極ロック窓形状  
 LOCKING WINDOW FOR 2, 3 CIRCUIT

4極以上ロック窓形状  
 LOCKING WINDOW FOR MORE THAN 4 CIRCUIT



12.95	13.05	11.25	14.25	510471000	10
11.7	11.8	10	13	510470900	9
10.45	10.55	8.75	11.75	510470800	8
9.2	9.3	7.5	10.5	510470700	7
7.95	8.05	6.25	9.25	510470600	6
6.7	6.8	5	8	510470500	5
5.45	5.55	3.75	6.75	510470400	4
4.2	4.3	2.5	5.5	510470300	3
2.95	3.05	1.25	4.25	510470200	2
D	C	B	A	発注番号 ORDER NO	極数 CIRCUIT
梱包状態: ポリ袋 PACKAGING: POLYBAG					

2 TABLE 1

部品 PART	材質 MATERIAL
ハウジング HOUSING	ポリエステル(PBT), UL94V-0, 色: ナチュラル(白) POLYESTER (PBT), UL94V-0, COLOR: NATURAL (WHITE)

THIS DRAWING CONTAINS INFORMATION THAT IS PROPRIETARY TO MOLEX ELECTRONIC TECHNOLOGIES, LLC AND SHOULD NOT BE USED WITHOUT WRITTEN PERMISSION.

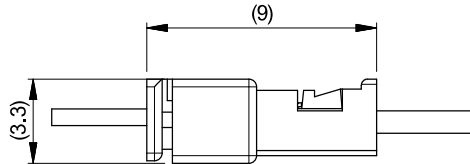
DIMENSION UNITS: mm	SCALE: NTS	CURRENT REV DESC: REVISED	<b>molex</b>		
GENERAL TOLERANCES (UNLESS SPECIFIED)					
ANGULAR TOL ± 3.0°	EC NO: 698818	DRWN: HHUSSIN	PICOBLADE 1.25 WTW PLUG HOUSING		
4 PLACES ± 0.2	CHKD: SAKIYAMA	APPR: AIDA	PRODUCT CUSTOMER DRAWING		
3 PLACES ± 0.2	INITIAL REVISION:	DRWN: QHE31	DOC NUMBER: 510470000-SD	DOC TYPE: PSD	DOC PART: 000
2 PLACES ± 0.2	DRWN: KOMURAKAMI	APPR: KOMURAKAMI	CUSTOMER: SEE CHART	REVISION: B	SHEET NUMBER: 1 OF 2
1 PLACE ± 0.2	DRAFT WHERE APPLICABLE MUST REPAIR WITHIN DIMENSIONS	THIRD ANGLE PROJECTION	DRAWING: A3-SIZE	SERIES: 51047	
0 PLACES ± 0.2					

回路番号 1 マーク  
 CIRCUIT 1 INDICATOR MARK

△ 適合製品及び各種仕様書  
 APPLICABLE PRODUCTS AND VARIOUS SPECIFICATIONS

梱包仕様書 PACKAGING SPECIFICATION		PART NUMBER 51047**00		DOCUMENT NUMBER 510479300-RPK 200	
適合プラグ端子 APPLICABLE PLUG TERMINAL		PLATING TYPE TIN		PART NUMBER 501258*00	WIRE SIZE(AWG) #26 - #28
				501338*00	#28 - #32
適合嵌合相手 MATE WITH		PART NUMBER 51021**00			
適合リセプタクル端子 APPLICABLE RECEPTACLE TERMINAL	PLATING TYPE	TIN			
	PART NUMBER	500798*00	500588*00	500798001	500588001
	WIRE SIZE (AWG)	#26-28	#28-32	#26-28	#28-32
製品仕様書 PRODUCT SPECIFICATION		PS-51021-009 PS 001		510211109-PS PS 000	
アプリケーション仕様書 (取扱説明書) APPLICATION SPECIFICATION		510210001-AS PS 000			

嵌合図  
 MATED CONNECTORS



THIS DRAWING CONTAINS INFORMATION THAT IS PROPRIETARY TO MOLEX ELECTRONIC TECHNOLOGIES, LLC AND SHOULD NOT BE USED WITHOUT WRITTEN PERMISSION.											
DIMENSION UNITS mm		SCALE NTS		CURRENT REV DESC: REVISED				<p>PICOBLADE 1.25 WTW PLUG HOUSING</p> <p>PRODUCT CUSTOMER DRAWING</p>			
GENERAL TOLERANCES (UNLESS SPECIFIED)						EC NO: 698818					
ANGULAR TOL ± 3.0°						DRWN: HHLUSSIN		2022/04/19		DOC TYPE: PSD	
4 PLACES ± 0.2						CHKD: SAKIYAMA		2022/04/19		DOC PART: 000	
3 PLACES ± 0.2						APPR: AIDA		2022/04/19		REVISION: B	
2 PLACES ± 0.2						INITIAL REVISION:		2021/06/28		DOCUMENT NUMBER	
1 PLACE ± 0.2						DRWN: QHE31		2021/12/24		510470000-SD	
0 PLACES ± 0.2						APPR: KOMURAKAMI		2021/12/24		MATERIAL NUMBER	
DRAFT WHERE APPLICABLE MUST REMAIN WITHIN DIMENSIONS						THIRD ANGLE PROJECTION		DRAWING		CUSTOMER	
						A3-SIZE		SERIES		SHEET NUMBER	
						51047		SEE CHART		2 OF 2	